

# Farrell Engineering Ltd

Westbury House, 23-25 Bridge Street, Pinner HA5 3HR United Kingdom

Tel : 0044-208-3432 3291 Fax : 044-208-9657586

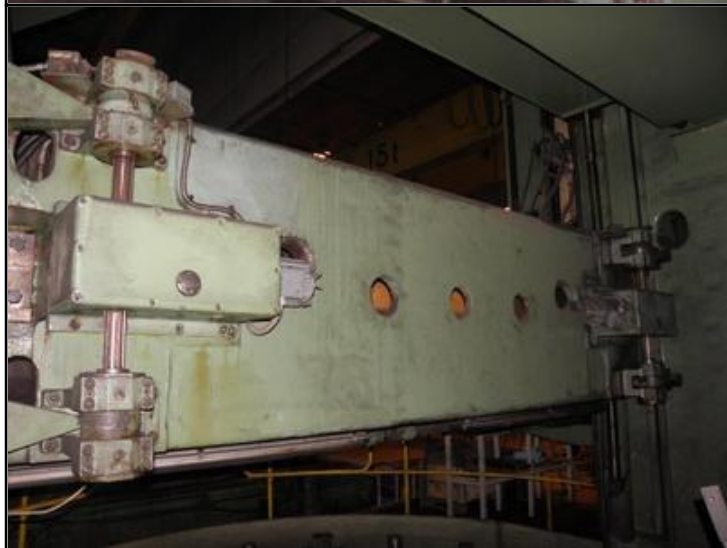
Email : [chan@farrellengineering.com](mailto:chan@farrellengineering.com)













Category	:-	Vertical Turning Lathe (VTL) All Types Conventional & Cnc	Serial No	:-	
Model	:-	1540T	Country	:-	Russia
Make	:-	Kolomna	Type of Machine	:-	Vertical Turning Lathe Machine
Year	:-	1977	Weight	:-	0.0
Dimensions	:-	mm 5900 x 10100 x 7200	Power	:-	
Location	:-		Asking Price	:-	On Request

Specification :-

**Max. work piece diameter, mm 4000**  
**Max. work piece height, mm 2000**  
**Chuck diameter, mm 4000**  
**Max. work piece weight, kg 50000**  
**Max. travel of vertical supports, mm 1250**  
**Max. cutting force on right support, kg 6300**  
**Max. cutting force on left support, kg 5000**  
**Supports possible work angle, deg. -15...+40**  
**Chuck speed, rpm 0,52...48,7**  
**Movement of vertical and horizontal feeds, mm/min 0,0059...470**  
**Main electric motor power, kW 63**  
**Machine overall dimensions, mm 5900 x 10100 x 7200**  
**Height above floor level, mm 6000**  
**Machine weight, kg app. 100000**

Description :--