

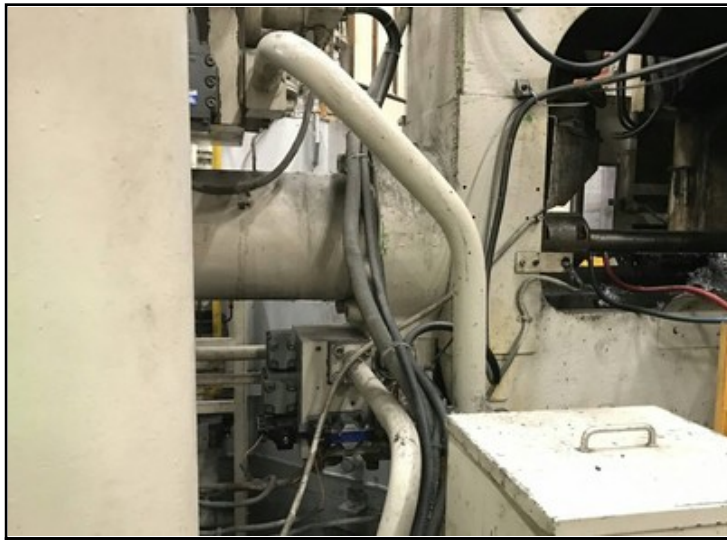
Farrell Engineering Ltd

Westbury House, 23-25 Bridge Street, Pinner HA5 3HR United Kingdom

Tel : 0044-208-3432 3291 Fax : 044-208-9657586

Email : chan@farrellengineering.com











Category	:-	Pressure Die Casting Machines (PDC)	Serial No	:-	
Model	:-	DC800C	Country	:-	
Make	:-	TOSHIBA	Type of Machine	:-	Die Casting Machine
Year	:-	0	Weight	:-	0.0
Dimensions	:-		Power	:-	
Location	:-		Asking Price	:-	On Request

Specification :-

- Total: 3500ton x 6 sets
- Item: DIE-CAST M/C

- Maker: TOSHIBA
- Model: DC800C
- Year:1989-1992
- Capacity: Numerical clamping force 3,500tons

- Die-interval(horizontalxLongitudinal): 1,600x1,800mm
- Die-Bar diameter standard: 370mm
- Die-stroke: 1,390-1,500mm
- Die-space: 1,000-2,000mm
- Casting power: 150-170ton
- Plunger stroke: 1,150mm more
- Quantity of Chip: MAX 500mm
- Chip Diameter: 100-170mm
- Casting Position: 350mm
- Casting speed(0.5-2.0mm): Empty striking MAX 4.5m/sec
- Core
- Fixed type: 3/4x1
- Movable type: 3/4x1
- Extrusion force: 40-90ton
- Extrusion stroke: 20-200mm

Description :--