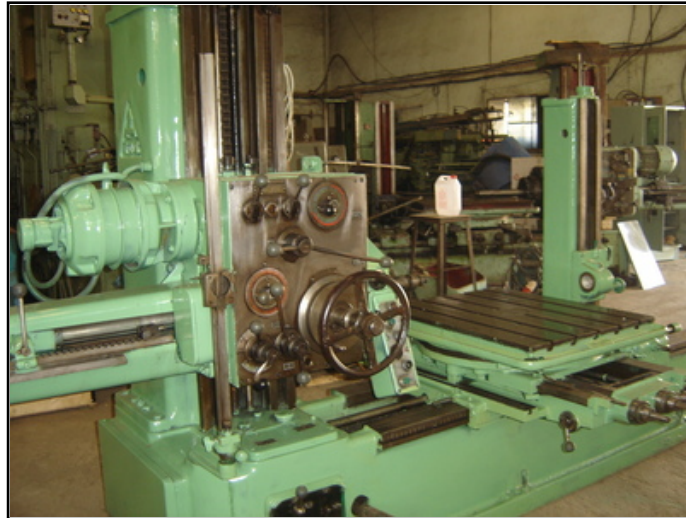


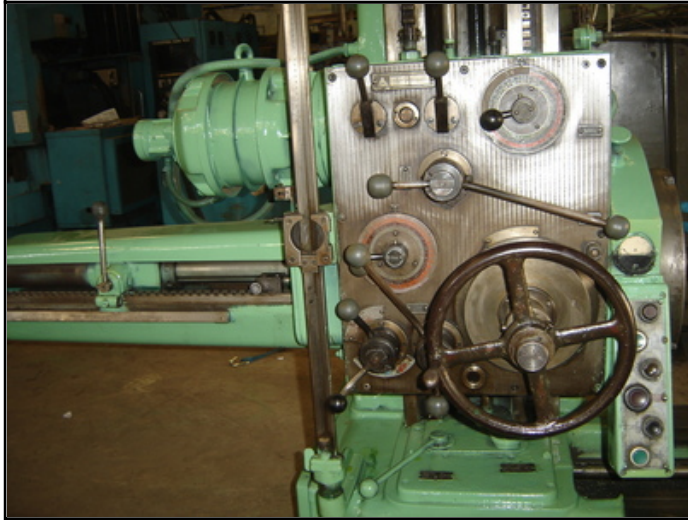
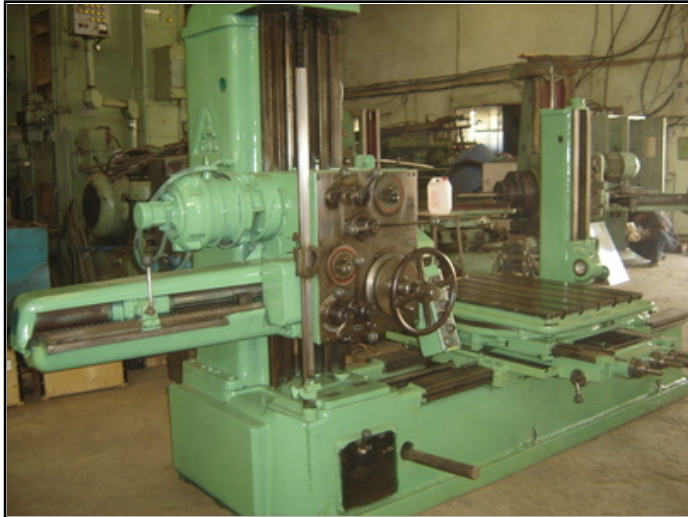
Farrell Engineering Ltd

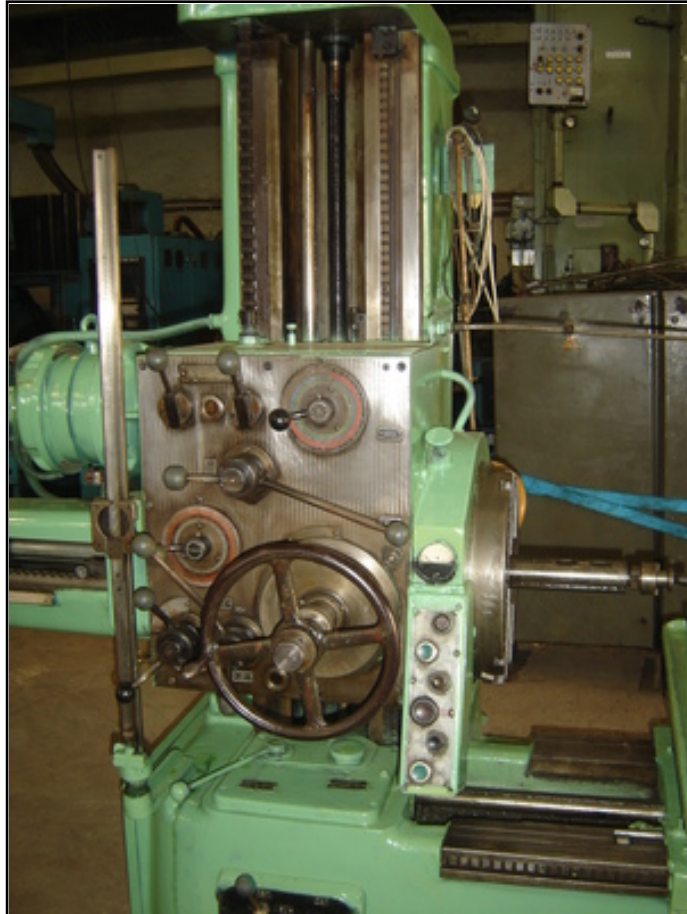
Westbury House, 23-25 Bridge Street, Pinner HA5 3HR United Kingdom

Tel : 0044-208-3432 3291 Fax : 044-208-9657586

Email : chan@farrellengineering.com











Category	:- Borers All Types	Serial No	:-
Model	:- h-63a (tos)	Country	:- Czech Republic
Make	:- tos	Type of Machine	:- horizontal table type borer
Year	:- 0	Weight	:- 0.0
Dimensions	:- length 3975mm, width 2000mm, height 2230mm	Power	:- Total motor power: 4KW
Location	:- Mumbai WareHouse, India	Asking Price	:- On Call

Specifications :-
Type WH 63
Spindle taper: 4MT
Spindle dia.: 63mm
Spindle speeds: 8 - 1400rpm
Table size: 900 x 700 mm
Drilling movement: 560mm
Table load: 2000kg
Rotary table motion: 360 degrees
Cross travel: 850mm
Longitudinal travel: 1000mm
Vertical travel: 710mm
Feeding range: 0.02 - 12mm/r
Rapid feeding: 3 directions

Descriptions :-
The Machine is Complete In All Respects.
The Machine Has Face chuck, Rotary Table & Tailstock.