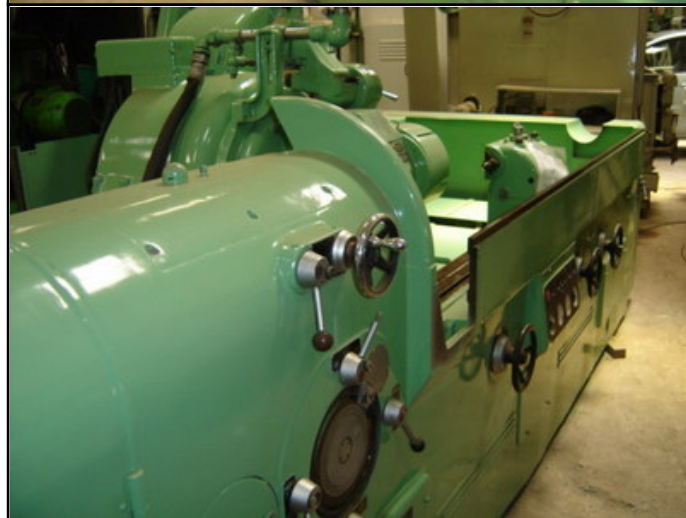


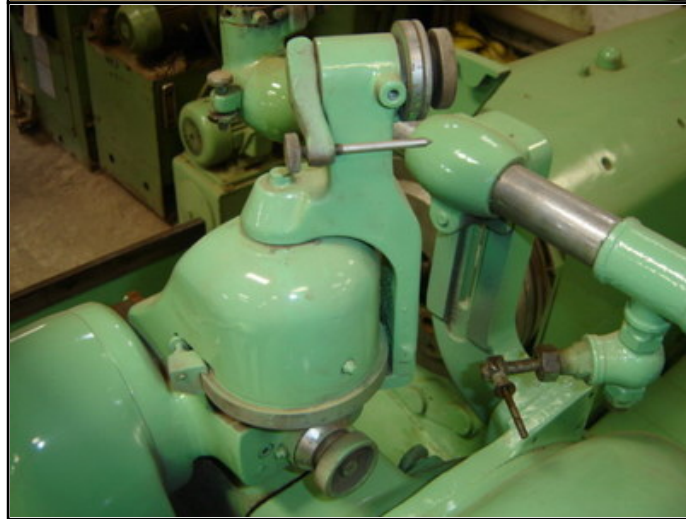
Farrell Engineering Ltd

Westbury House, 23-25 Bridge Street, Pinner HA5 3HR United Kingdom

Tel : 0044-208-3432 3291 Fax : 044-208-9657586

Email : chan@farrellengineering.com





Category	:- Thread / Worm Grinders	Serial No	:-
Model	:- 78 type 1 (external)	Country	:- Wales
Make	:- matrix	Type of Machine	:- thread grinder 2000mm
Year	:- 0	Weight	:- 0.0
Dimensions	:-	Power	:-
Location	:- Mumbai Warehouse,India	Asking Price	:- On Call

Specifications :-
Machine Specification Matrix Model (No78) Large Capacity

Thread Grinding Machine Type-1	
Swing over bed	24 (610MM)
Maximum between center	106 (2690 m. m.)
Maximum Length ground in one setting	86 (2180 m. m.)
Swing into Gap	30
Width of gap in front of faceplate	7
Workhead Spindle Bore	6
Morse taper of Centres	No-5
Maximum Diameter Ground	
With 20 dia wheel	10
Grinding Spindle Speeds (6)	1,000-2,000 r.p.m
Wheelhead Swivel to either side	
Of vertical	45o
Standard Grinding Wheel	20 dia x 1 thick x 10 dia bore
Wheel width limits	-3
Pitch Range	0.05 -.6
Work speeds	0.1 15.5 r.p.m
Return Speeds	3.1, 12.5 and 50 r.p.m.
Wheelhead Motor	15/1 H.P.
Workhead Moter	1 H.P.
Crushing Drive Motor	1/3 H.P.
Plunge feed Motor	1/3 H.P.

Descriptions :-