

Farrell Engineering Ltd

5, House of Farrell, St.Leonard Road London NW10 6NB United Kingdom

Tel: (020) 8965 7578 Fax: (020) 8965 7586

Email: info@farrellengineering.com





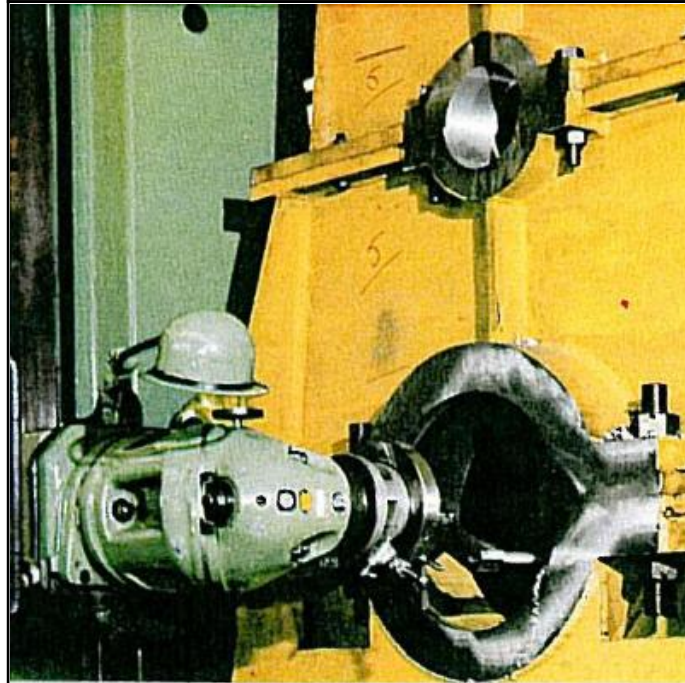
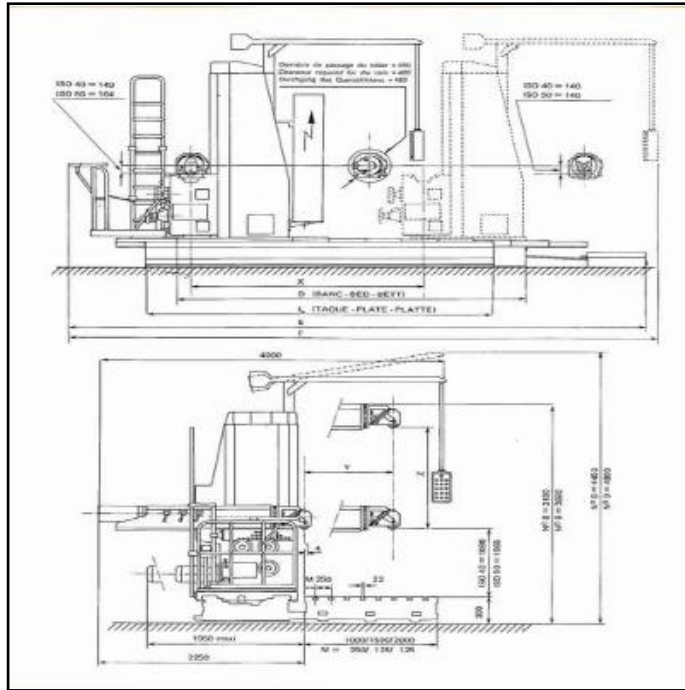




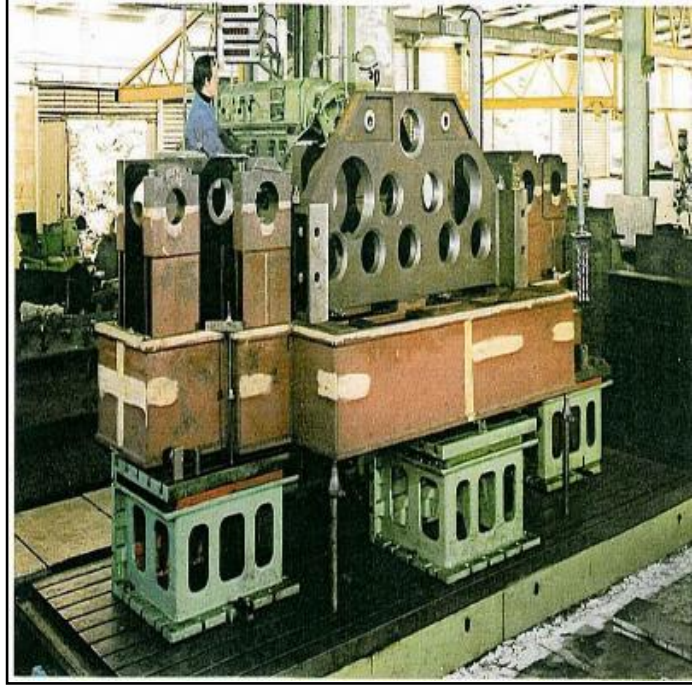






TABLE 8 or 9	COURSE VERTICAL Z	TABLE 1	COURSE TRANSVERSE Y
SIZE 8 or 9	METRIC TRAVERS Z	SIZE 2	CROSS TRAVEL Y
SPINDLE 8 oder 9	SCHNITTGESCHW. Z	SPINDELE 2	QUERSCH. Y
11100	11700	2	1880
12100	12700	3	2680
13100	13700	4	3880
14100	14700	5	4880
15199	15700	6	5880
16100	16700	7	6880
17100	17700	8	7880
18100	18700	9	8880
19100	19700	10	9880
20100	20700	11	10880
21100	21700	12	11880
22100	22700	13	12880
23100	23700	14	13880
24100	24700	15	14880
25100	25700	16	15880
26100	26700	17	16880
27100	27700	18	17880
28100	28700	19	18880
29100	29700	20	19880

TABLES ACIÉS PLASTES	TABLES EN ALUMINE PLATE			TABLES EN ALUMINE PLATE			TABLES EN ALUMINE PLATE		
	1000	1500	2000	1000	1500	2000	1000	1500	2000
2000	1880	2340	3120	6	6	9	3	6	8
3000	2340	3630	4580	9	9	12	3	6	8
4000	3120	4880	6240	12	12	15	3	6	8
5000	3900	6240	8580	15	15	18	3	6	8
6000	4680	7620	10560	18	18	21	3	6	8
7000	5460	9000	12840	21	21	24	3	6	8
8000	6240	10400	15480	24	24	27	3	6	8





Category	:-	Milling Machines	Serial No	:-	not available
Model	:-	lu9423-a	Country	:-	
Make	:-	huron	Type of Machine	:-	heavy duty milling machine with floor plate of size 5000 x 1500 mm
Year	:-	0	Weight	:-	0.0
Dimensions	:-	not available	Power	:-	12hp
Location	:-	Mumbai India Warehouse	Asking Price	:-	On Call

Specifications :-
Travels are :
Weight Of Machine:- 28tons Aprox
Vertical : 2000mm

and Cross:4000mm
Spindle motor : 12 Hp
Iso 50
machine sold with floor plate dimension 5000 x 1500 mm

Descriptions :-