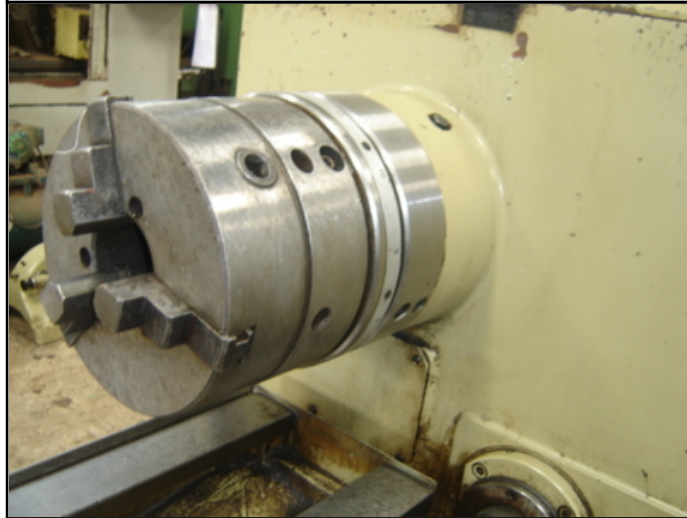


# Farrell Engineering Ltd

5, House of Farrell, St.Leonard Road London NW10 6NB United Kingdom  
Tel: (020) 8965 7578 Fax: (020) 8965 7586  
Email: [info@farrellengineering.com](mailto:info@farrellengineering.com)



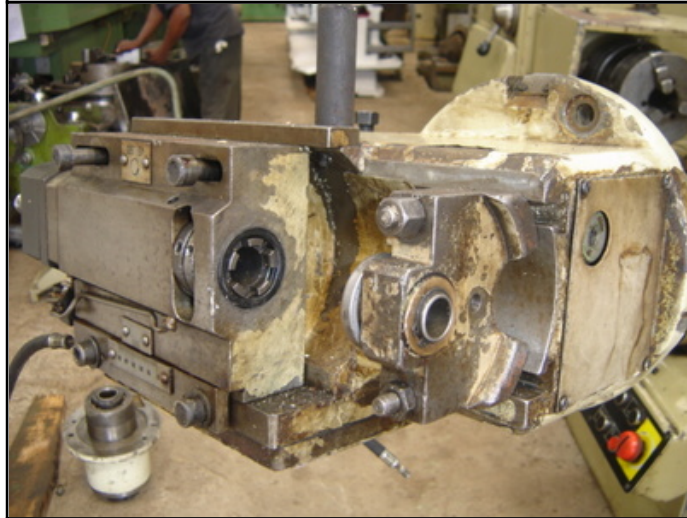
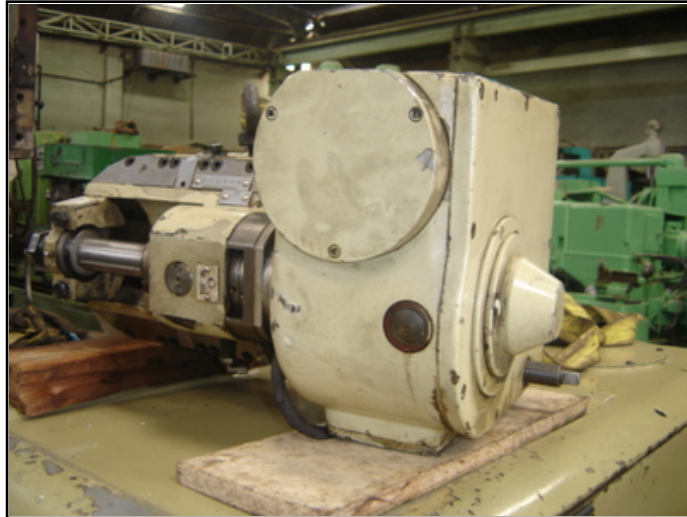


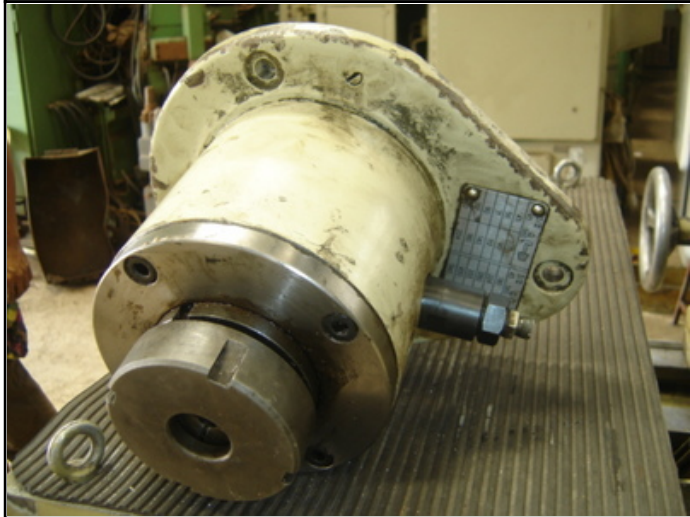
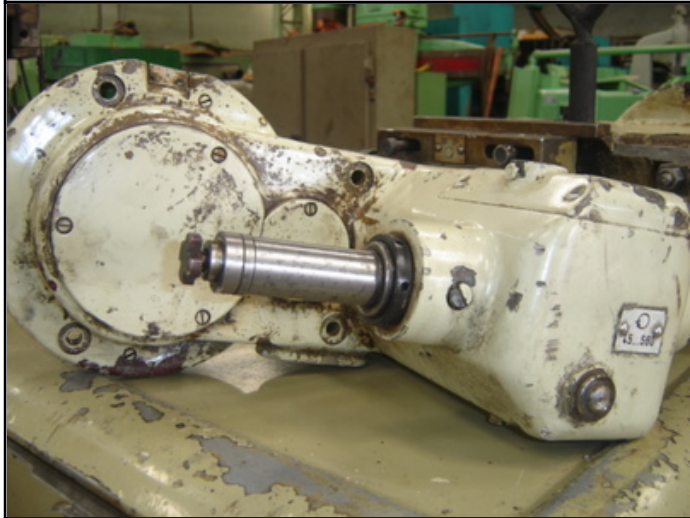
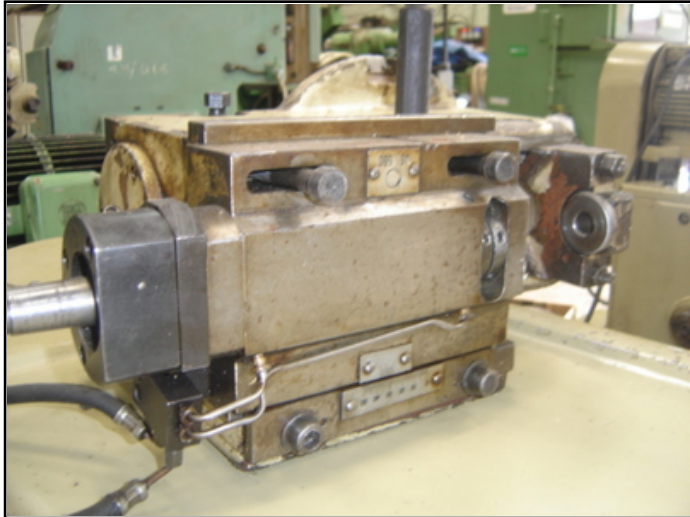
VEB		Starkstrom-Anlagenbau		Erfurt		Hergestellt in der		Deutschen Demokratischen Republik	
Typ	ZFW0 250-N								
Nr.	4-36 228/3								
Betr. Sp.	380 V	50 Hz	Stromart	3 N ~	Baujahr	1983			
Steuersp.	220 V	50 Hz	Stromart	Wa	Masse	65 kg			
Meldesp.	24 V	0 Hz	Stromart		IP	43/40			
Nennstr. Zultg.-Sich.	35 Atr.	Anschl. W	8,5 kW	Klimasch.					
Nennstr. Steuersich.	6 Atr.	Nennstr.	18 A	Klimapr.					
Variante Nr.				Temp.-B	-10 bis 55 °C				
Schaltplan	248.01-0900								















Category	:- Thread Milling / Spline Hobbing	Serial No	:- Not Available
Model	:- ZFWVG 250 x 1250	Country	:- Germany
Make	:- WMW HECKERT	Type of Machine	:- Thread Milling- and Hobbing Machine With Four Heads like New
Year	:- 1983	Weight	:- 0.0
Dimensions	:-	Power	:-
Location	:- Mumbai Warehouse	Asking Price	:- On Request

Specifications :-
<p>Please Click Here online For Video</p> <p>Accessories:- Please Click Here online For Video</p> <p>Machine Hardly Used .Very Very Heavily Equipped Four WMW Heads,80 Change Gears.10 Centres Original18 Arbours Original04 Counter Weights04 Steadies + DresserManuals Available</p> <p>Technical details</p> <p>max. workpiece diameter 250 mm</p> <p>threading length 1250 mm</p>

max. module  
18

min. module  
2

center height over bed  
260 mm

workpiece spindle bore  
102 mm

bore of the collets  
100 mm

tailstock quill stroke  
100 mm

lead of leadscrew  
1,2 " links / left mm

workpiece turning speeds  
0,0032-2,65 U/min

rolling feed  
0,027-5,66 mm/WU

longitudinal hob feeds  
0,3-198 mm/min

main drive  
4 kW

feed motor  
25 NM

coolant pump  
0,09 kW

lubrication pump  
0,37 kW

electrics - voltage/frequency  
380 / 50 V/Hz

control voltage  
24 V

total power requirement  
9,5 kW

weight of the machine ca.  
3,40 t

**Descriptions :-**

**THIS MACHINE IS EQUIPPED WITH THE FOLLOWING: \* 4 Head\* Thread Milling Head\* End Milling Head\***  
Set-up of 75 change gears  
\* 4 Counter Weights



\* 12 Arbours of various sizes original wmw make

\* 10 Wmw Make Centres Original.

\* 04 Steadies

Suitable for:-Thread milling of single and multiple external threads with leads 1-800mm-Internal thread milling-Short milling of in- and external threads-Hobbing of parallel to the axis and twisted profiles-Longitudinal milling of axes parallel profiles in single indexing-Milling of work pieces with variable core in work piece axis direction