

Farrell Engineering Ltd

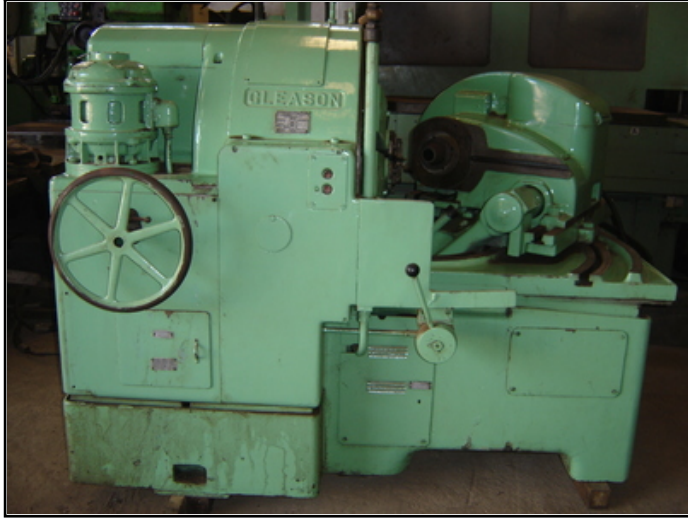
Westbury House, 23-25 Bridge Street, Pinner HA5 3HR United Kingdom

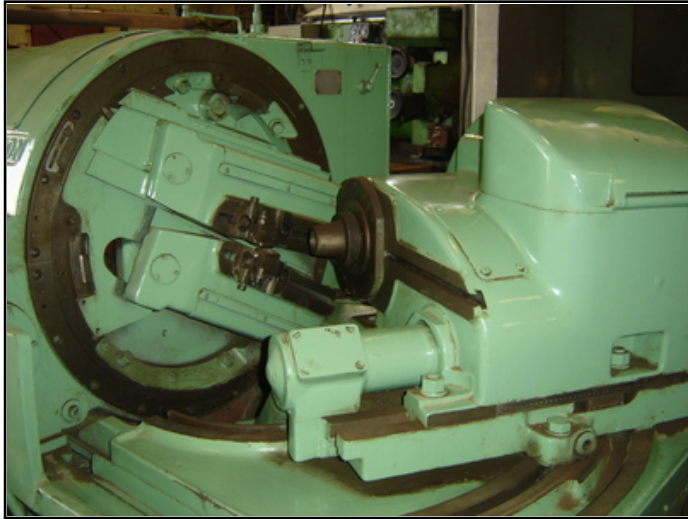
Tel : 0044-208-3432 3291 Fax : 044-208-9657586

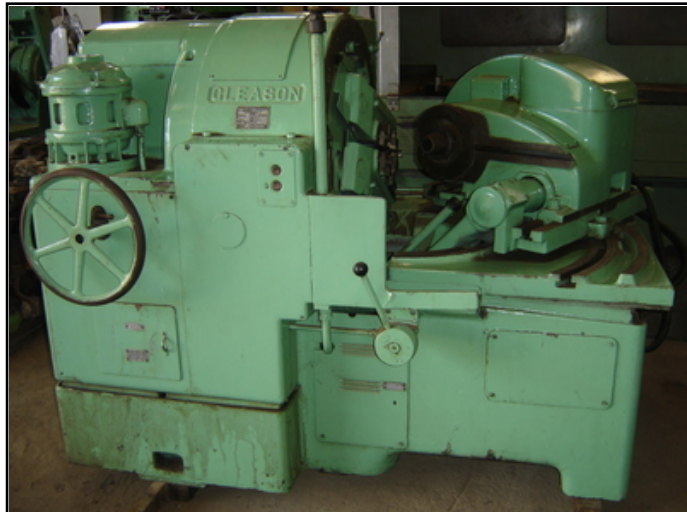
Email : chan@farrellengineering.com



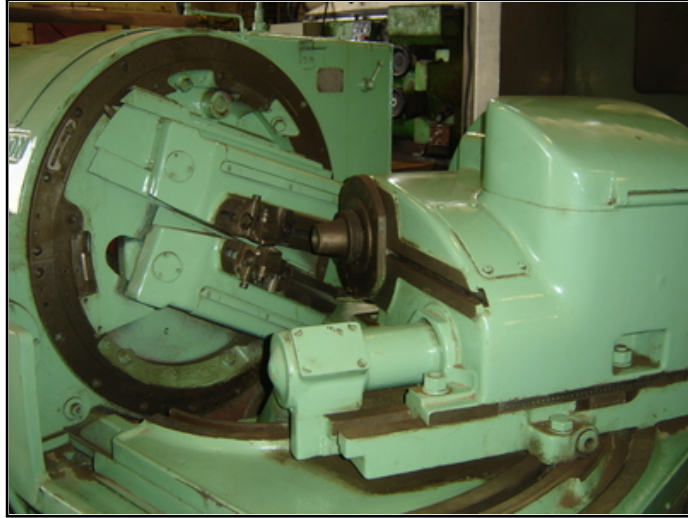


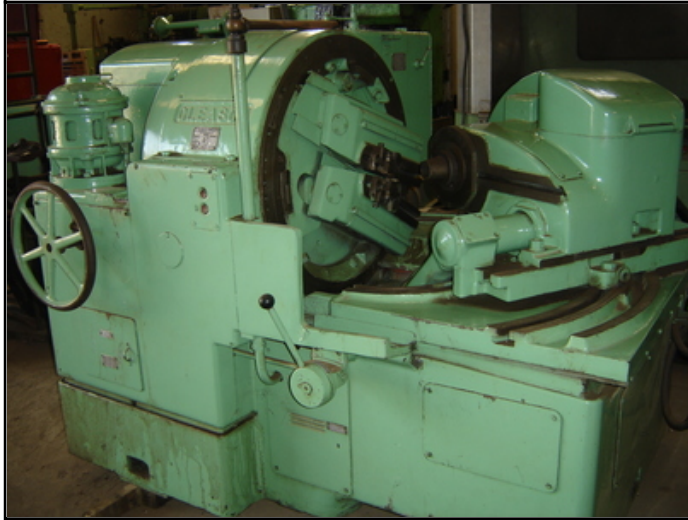














Category	:- Gear Related Machines	Serial No	:- 23744
Model	:- 14	Country	:- United States
Make	:- Gleason	Type of Machine	:- Straight CONIFLEX STRAIGHT BEVEL GEAR GENERATOR
Year	:- 1980	Weight	:- 0.0
Dimensions	:-	Power	:-
Location	:- Mumbai Warehouse	Asking Price	:- On Request

Specifications :-	
	Maximum cone distance (2.75"-3.5" face) ^{12"}
Maximum cone distance (1" face) ^{11-1/8"}	
Minimum cone distance ^{0"}	
Maximum pitch angle (angular gears) ^{105 deg}	
Maximum pitch angle (90-degree shafts) ^{84 deg/18min.}	
Minimum pitch angle ^{5 deg/42min.}	
Maximum ratio ^{10/1}	
Maximum pitch diameter ^(see table)	
Maximum face width ^{3.5"}	
Maximum Stroke Length ^{.5"-4.5"}	
Index Range (inclusive (+up to 200)) ⁵⁻¹⁰⁰	
Maximum pitch ^{3 DP (nominal)}	
Diameter of hole in work spindle (large end) ^{3-29/32"}	
Spindle taper per foot ^{39/64"}	
Depth of spindle taper ^{6"}	
Diameter of spindle hole (15.75" deep) ^{3.25"}	
Spindle nose to center line ^{2.5 to 15"}	

Descriptions :-