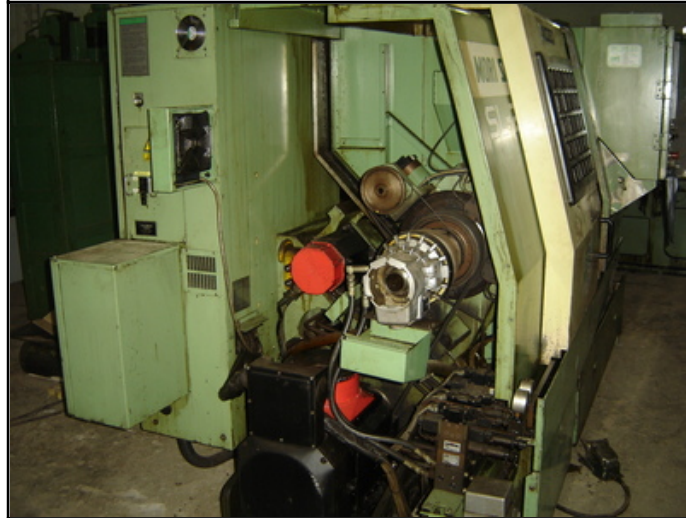


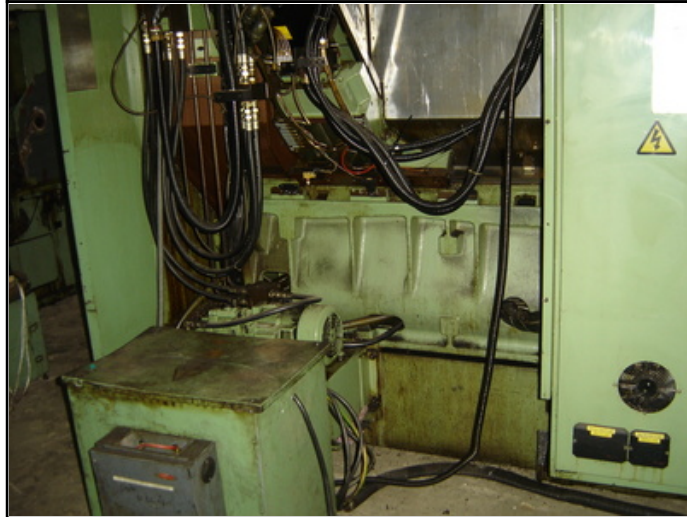
Farrell Engineering Ltd

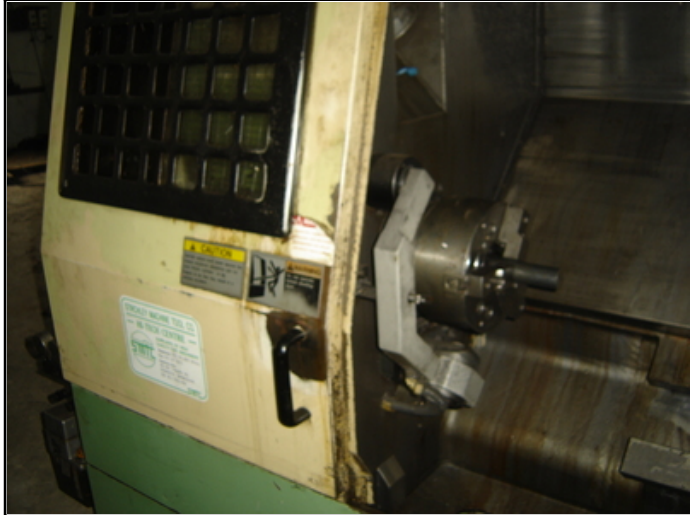
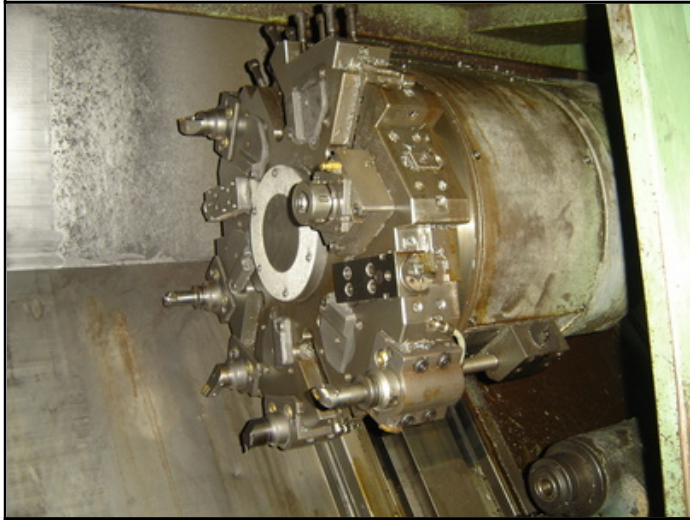
Westbury House, 23-25 Bridge Street, Pinner HA5 3HR United Kingdom

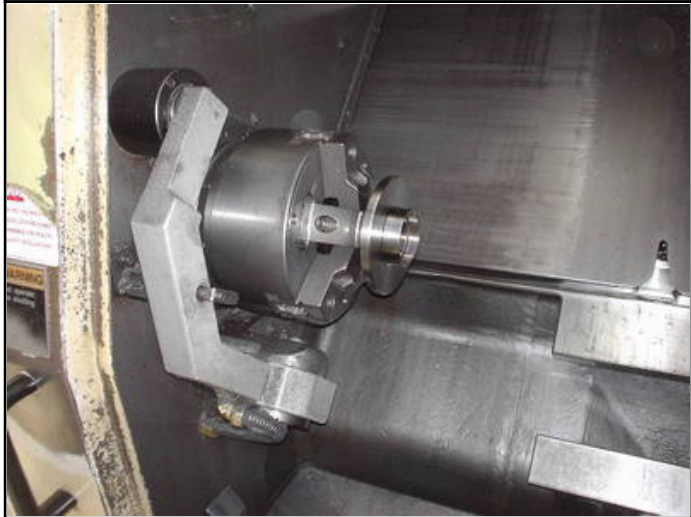
Tel : 0044-208-3432 3291 Fax : 044-208-9657586

Email : chan@farrellengineering.com











Category	:- CNC Lathes	Serial No	:-
Model	:- SL 25M (Turn & Mill)	Country	:- Japan
Make	:- Mori Seiki	Type of Machine	:- Cnc Horizontal Turn Mill Centre / Lathe
Year	:- 1993	Weight	:- 0.0
Dimensions	:-	Power	:-
Location	:- Mumbai Warehouse,India	Asking Price	:- On Call

Specifications :-
Mori Seiki Lathe with 250mm chuck

Tailstock and swarf conveyor included

Between centres over 500mm

Control : Fanuc 15T

Max Turn

368mm

Max Swing

482mm

Turn Between Center

508mm

Descriptions :-