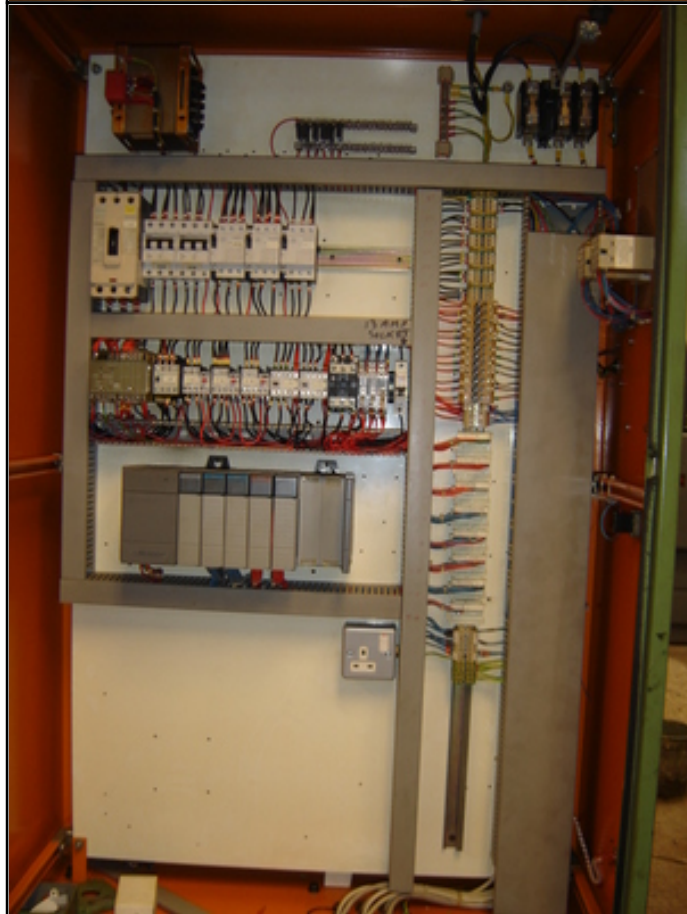


Farrell Engineering Ltd

5, House of Farrell, St.Leonard Road London NW10 6NB United Kingdom
Tel: (020) 8965 7578 Fax: (020) 8965 7586
Email: info@farrellengineering.com









Category	:-	Gear Related Machines	Serial No	:-	
Model	:-	S6	Country	:-	United Kingdom
Make	:-	Sykes	Type of Machine	:-	Gear Shaper Rebuilt
Year	:-	0	Weight	:-	0.0
Dimensions	:-		Power	:-	
Location	:-		Asking Price	:-	On Request

Specifications :-	
S.6. VERTICAL GEAR GENERATOR	
GENERAL DATA	
PITCH MAX.	6 DP(4,2 Mod)

STROKE STAND ARR D MACHINE 2 in(50 ,8mm)
HELIX ANGLE MAX. 450
BLANK DIA. ,EXTERNAL GEARS 7 in. (180 mm) Up to 10 (254 mm)
 Subject to engineering approval.
MAX. WORK TO CUTTER CENTRE 8 in (203, 2 mm)
DISTANCE.
MIN. WORK TO CUTTER CENTRE 3 in (88 , 9 mm)
DISTANCE.
NOMINAL SPINDLE DIA. 3 in (88 , 9 mm)
CUTTER SPINDLE LOCATION (STANDARD) 1 in (44,45 mm)
CUTTER LOCKING SCREW THREAD M 36 x 1,5
MAXIMUM CUTTING SPEED 150 f t / min.
MAXIMUM CUTTER TO WORK RATIO 5 : 1
CUTTING SPEED RANGE
STANDARD MACHINE STANDARD RELIFF CAM 80- 650)strokes /-LOW RELIFF CAM -200 1,000) min.
MAX . DROP OFF 4 in (114,3 mm)
TAILSTOCK
WORKING HEIGHT MIN. 10 7/8 in (276 mm)
WORKING HEIGHT MAX. 13 5/8 in (346 mm)
INFEED
TYPE HYDRAULIC
RANGE INFEED PER STROKE .0005 in - .002in.
NUMBER OF CUTS 1, 2 or 3.
DEPTH SETTING MICROMETERS ON REAR OF MACHINE
COLUMN DROP OFF HYDRAULIC.
INFEED DIRECTION IN ONLY .

CUTTERHEAD OFFSET 0.6 in. RIGHT OR LEFT
MOTORS -
TYPE TOTALLY ENCLOSED
MAIN MOTOR 5 HP 950 R. P.M.
COOLANT MOTOR HP 2850 R. P. M.
HYDRAULIC MOTOR 1 HP
CONTROL CIRCUIT VOLTAGE 110 Volts
MOTOR OVERLOADS THERMAL
OVERALL HEIGHT 80 in .
OVERALL WIDTH 33 in.
OVERALL DEPTH (FRONT TO BACK) 69 in.
FLOOR AREA DOORS OPEN 92 in x 38 in.
WEIGHT (APPROX .) STD. 3 Tons .
COOLANT CAPACITY 33 Gallons.
LUBRICANT CAPACITY 3 Gallons.
HYDRAULIC OIL CAPACITY 10 Gallons.

Descriptions :-