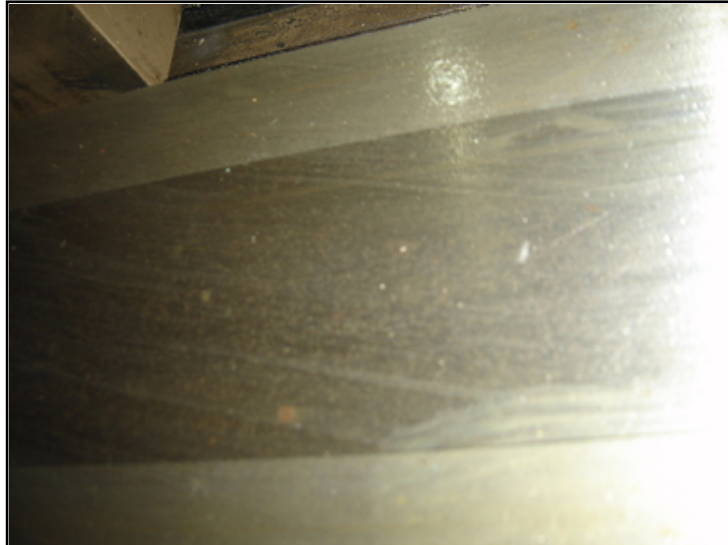


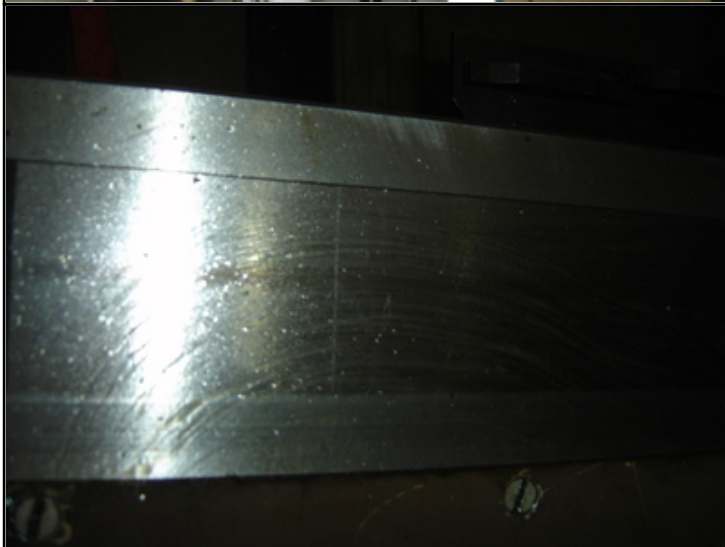
Farrell Engineering Ltd

Westbury House, 23-25 Bridge Street, Pinner HA5 3HR United Kingdom

Tel : 0044-208-3432 3291 Fax : 044-208-9657586

Email : chan@farrellengineering.com







Category	:-	Borers All Types	Serial No	:-	
Model	:-	bft 110	Country	:-	Germany
Make	:-	WMW union	Type of Machine	:-	Table Type Borer With Ball Screws & POWER ROTARY TABLE
Year	:-	1995	Weight	:-	0.0
Dimensions	:-		Power	:-	
Location	:-	Mumbai Warehouse,India	Asking Price	:-	On Request

Specification :-

Spindle Size: 4.331 ' / 110mm

X-Horiz Tvl Of Table: 76.772 ' / 1,950mm

Y-Vert Tvl Of Head: 62.992 ' / 1,600mm

RPM: 1120 rpm

Table-W:49.213 ' / 1,250mm

Table-L: 55.118 ' / 1,400mm

Z-Spdl Tvl: 31.496 ' / 800mm

Weight 24 tons

Control: Point to Point Control

EQUIPPED WITH:

Working Video available

TELESCOPING STAINLESS STEEL WAY COVERS

POINT TO POINT OPERATION

PENDANT CONTROL

BALL SCREWS

POWER ROTARY TABLE

10' SLIDE ON FACING HEAD TOOL

DIGITAL LINE READOUT

Description :--