

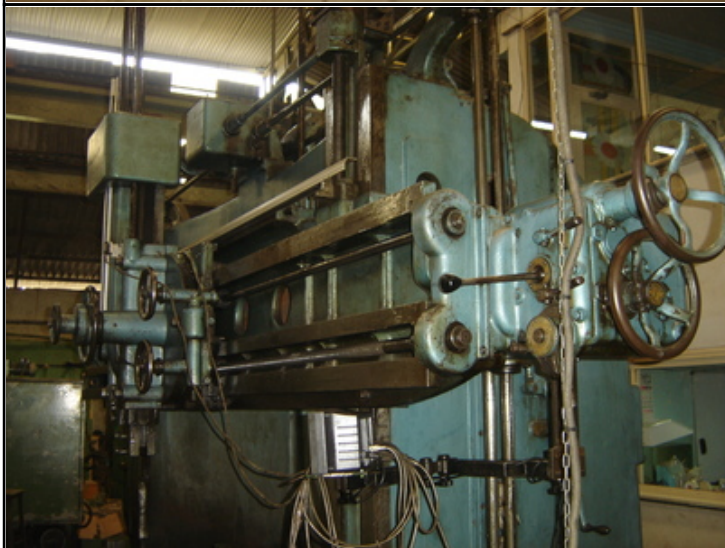
# Farrell Engineering Ltd

Westbury House, 23-25 Bridge Street, Pinner HA5 3HR United Kingdom

Tel : 0044-208-3432 3291 Fax : 044-208-9657586

Email : [chan@farrellengineering.com](mailto:chan@farrellengineering.com)

























Video :-

Please click here for video no.1	
Please click here for video no.4	
Please click here for video no.5	
Please click here for video no.6	
Please click here for video no.7	
Please click here for video no.8	
Please click here for video no.9	
Please click here for video no.10	
Please click here for video no.11	
Please click here for video no.12	

Category	:-	Vertical Turning Lathe (VTL) All Types Conventional & Cnc	Serial No	:-	Not Available
Model	:-	1720 1L	Country	:-	Germany
Make	:-	GRAFFENSTADEN	Type of Machine	:-	vertical turning lathe (2500mm)
Year	:-		Weight	:-	0.0
Dimensions	:-		Power	:-	
Location	:-	Mumbai Warehouse,India	Asking Price	:-	On Request

Specification :-

**One used REBULIT UNDER POWER vertical borer GRAFFENSTADEN model 1720 1L in the 2003 with new motor, electrics and DRO**

**Specs are :**

- Table diameter : 2250 mm**
- Maxi swing : 2500 mm**
- Distance table crossrail : 1500 mm**
- Speeds from 0,75 to 40 rpm**
- Motor 30 KW**

**equipped with one straight ram orientable jaws DRO**

**2500 MM VTL**

**Completely Rebuilt By Graffenstaden in 2003,  
then after not used**

Description :-