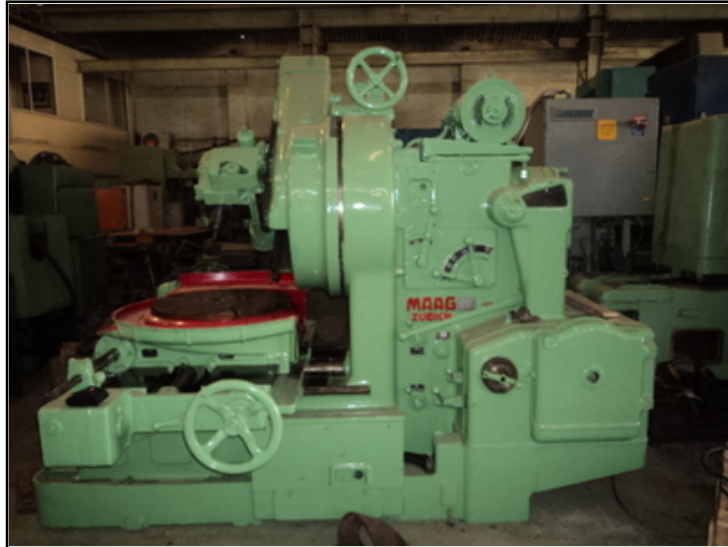


Farrell Engineering Ltd

Westbury House, 23-25 Bridge Street, Pinner HA5 3HR United Kingdom

Tel : 0044-208-3432 3291 Fax : 044-208-9657586

Email : chan@farrellengineering.com





Category	:-	Gear Related Machines	Serial No	:-	
Model	:-	SH 100 (with internal head)	Country	:-	Switzerland
Make	:-	Maag	Type of Machine	:-	universal gear shaper with 345mm stroke and internal head
Year	:-	1981	Weight	:-	0.0
Dimensions	:-		Power	:-	
Location	:-	mumbai warehouse,India	Asking Price	:-	On Request

Specification :-

Max wheel Ø1200 mm

Module + 15

Module - 2

Max. spindle speed

Max. gear width 320 mm

Motor power

Length x width x height 3300 mm x2200 mm x2800 mm

Weight 9000 kg

Worked power hours

State good

At local norms -----

Status visible

Description :--

Tooth width - helical gear - 15 degrees 290 mm
tooth width - helical gear - 30 degrees 255 mm
tooth width - helical gear - 45 degrees 200 mm
ram stroke range 8,6 - 33,8 Hub/min
down feeds 43,2 - 110 mm/Hub
rotary feeds 9-80 Hub/Tlg.
electrics - voltage/frequency 380/50 V/Hz
total power requirement 16 PS
weight of the machine ca. 9 t
dimensions of the machine ca. 3,3 x 2,2 x 2,8 m