

Farrell Engineering Ltd

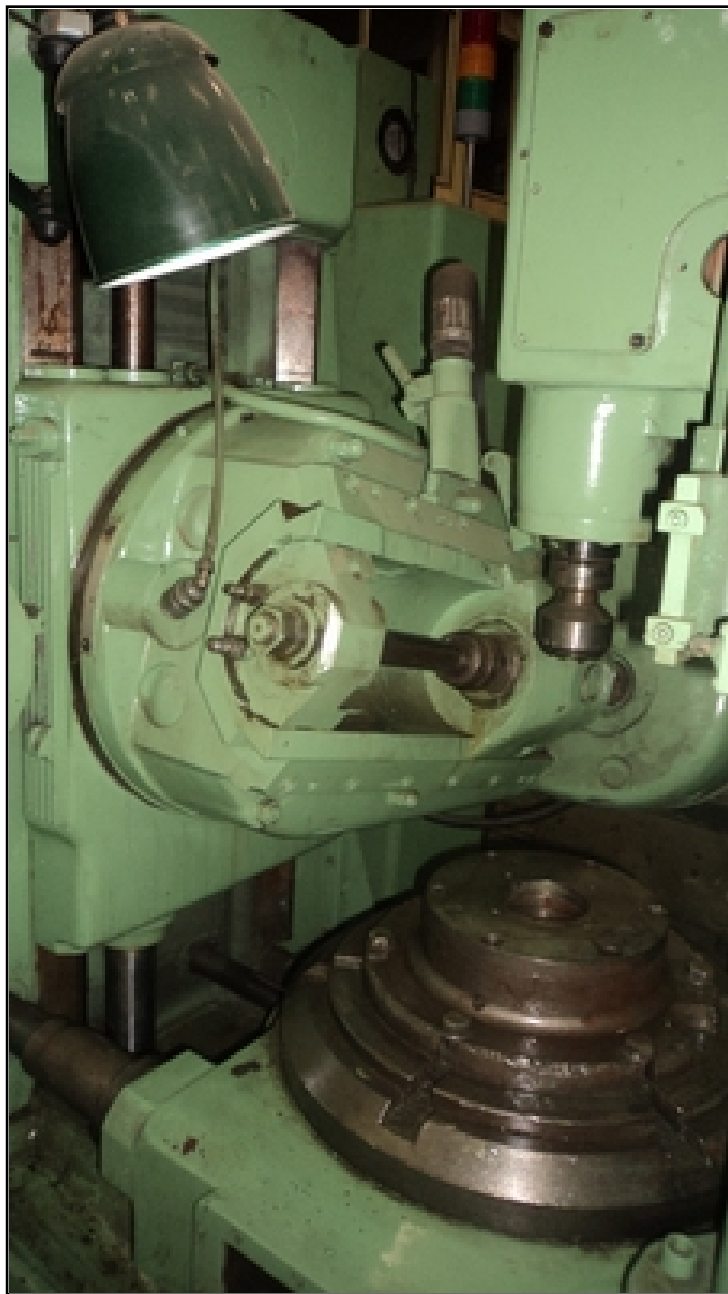
Westbury House, 23-25 Bridge Street, Pinner HA5 3HR United Kingdom

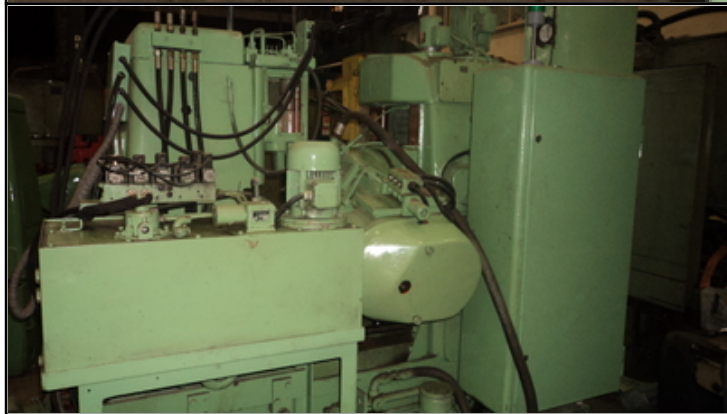
Tel : 0044-208-3432 3291 Fax : 044-208-9657586

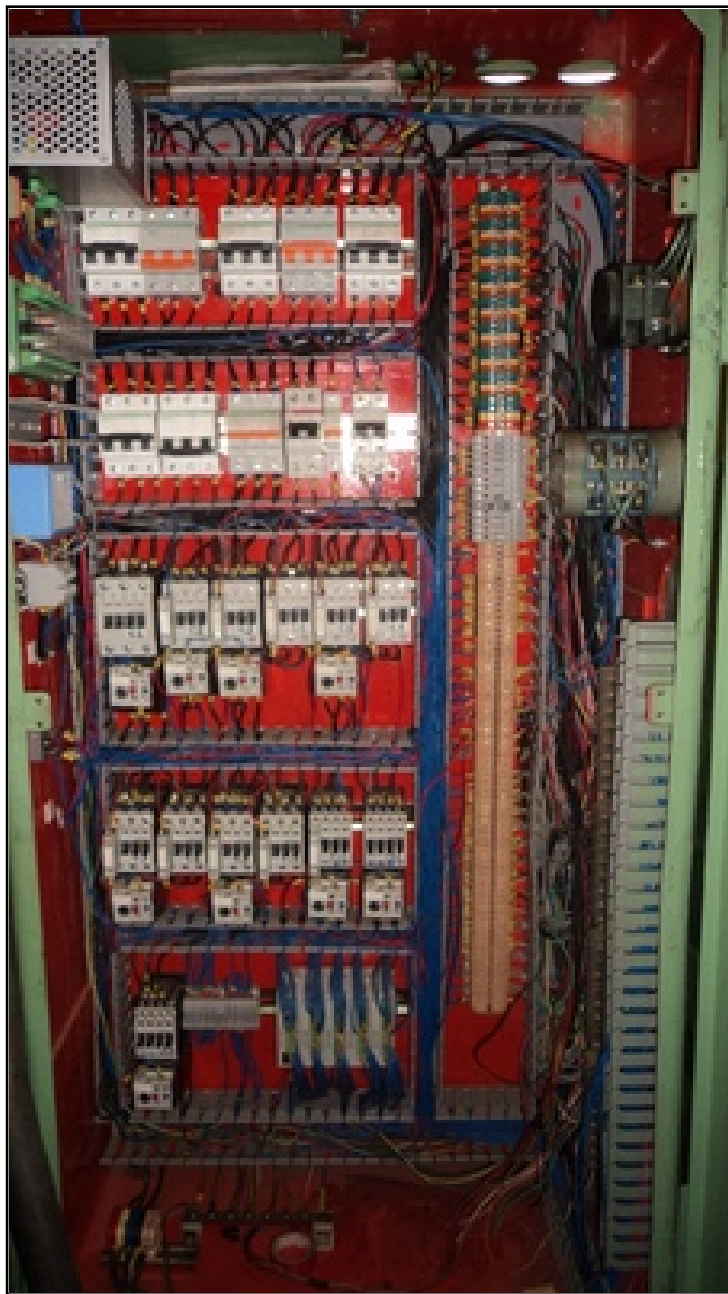
Email : chan@farrellengineering.com













Category	:-	Gear Hobbers	Serial No	:-	
Model	:-	p 400 (PLC)	Country	:-	Germany
Make	:-	Pfauter	Type of Machine	:-	used gear hobbing machine
Year	:-	1975	Weight	:-	0.0
Dimensions	:-		Power	:-	
Location	:-	Mumbai Warehouse,India	Asking Price	:-	On Request

Specification :-

Max. Gear Diameter : 400 mm

Module : 6

Hobbing Length : 300 mm

Max. Length of Workpiece appr. : 600 MM

Table Diameter : 400 mm

Table Bore, appr. : 90 mm

Hob Carriage, swivelling : 240 degr.hOB size

Hob Size : 160 mm dia x 160 mm

Hob Shifting, max. : 100 / 120 mm

Hob Spindle Speeds : 80 - 480 rpm

Feed Range, axial, infinitely variable : 0.4 - 4.95 mm / rev

Feed Range, radial, infinitely variable : 0.1 - 1.22 mm / rev

Feed Range, tangential, infinitely variable : 0.17 - 2.1 mm / rev

Spindle Drive, appr. : 7.5 kW

Total electrical load, appr. : 10 kW - 380 V - 50 Hz

Description :--

Good condition

Special Features

Selection Switch for various hobbing programmes, radial/axial quick feed. Hob shifting device. Differential drive for helical teeth. Set of change gears. Separate hob mandrel. Built-on chip conveyor. Coolant device