

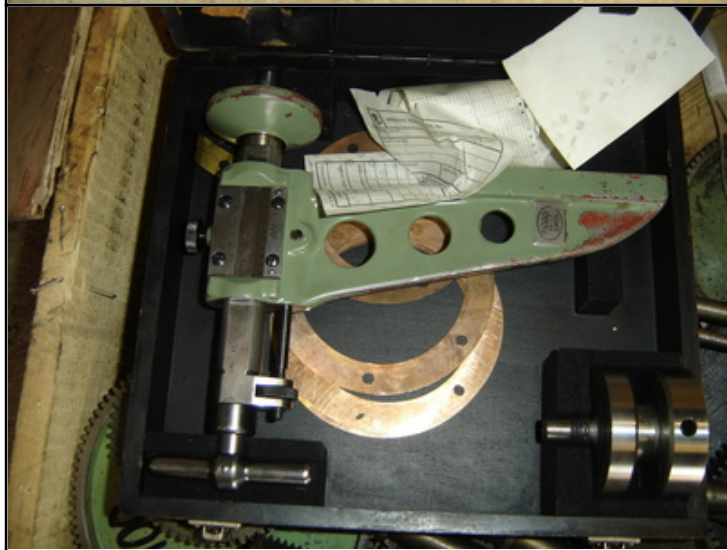
Farrell Engineering Ltd

Westbury House, 23-25 Bridge Street, Pinner HA5 3HR United Kingdom

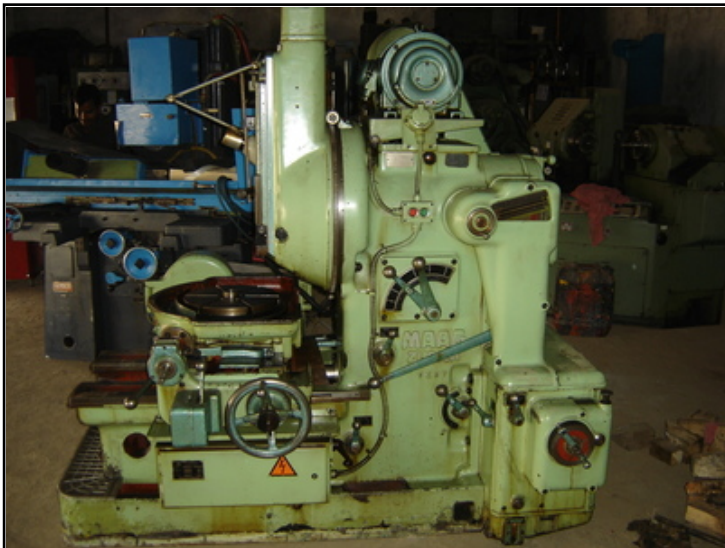
Tel : 0044-208-3432 3291 Fax : 044-208-9657586

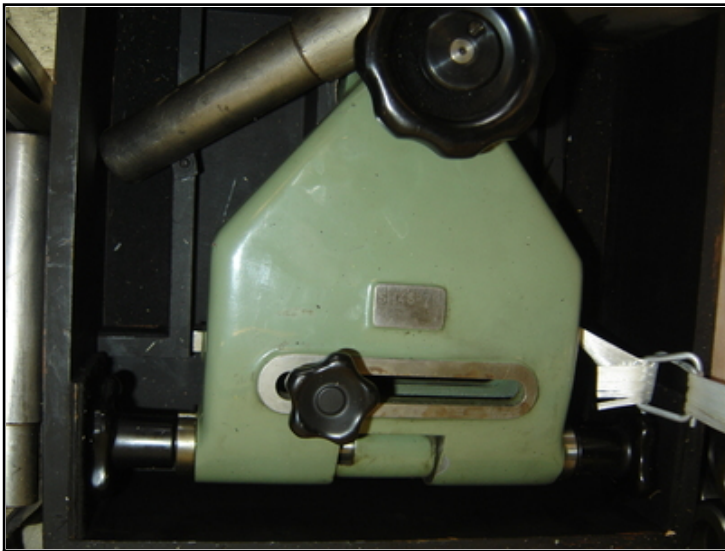
Email : chan@farrellengineering.com
















Video :-

Please Click Here For Video No. 01	
Please Click Here For Video No. 02	
Please Click Here For Video No. 03	

Category	:-	Gear Related Machines	Serial No	:-	
Model	:-	45	Country	:-	Switzerland
Make	:-	Maag	Type of Machine	:-	Gear Shaper
Year	:-	1973	Weight	:-	0.0
Dimensions	:-		Power	:-	
Location	:-	Mumbai Warehouse,India	Asking Price	:-	On Request

Specification :-

The MAAG SH-45 Gear Cutting Machine is suitable for machining of:

*** External & internal cylindrical gears**

*** Pinions ***

Spur & helical gears *

Gear teeth with longitudinal and profile corrections

*** Cluster gears**

*** Double helical gears**

*** Sprocket wheels ***

PARTICULAR ADVANTAGES:

* Wide range of applications (gear diameters 0.8' to 18')

* High economy (Thanks to simple, inexpensive tooling and high rate of metal removal)

* High accuracy (Long life assured by operating principle and robust machine construction)

* Automatic machining cycles (A large number of automatic working cycles are available for the various fields of application)

PRINCIPAL SPECIFICATIONS AS PER CATALOGUE:

Maximum/minimum rated diametrical pitch... 4.2/25
Maximum/minimum rated gear blank... 18'/0.8'
Maximum rated spur gear face width... 4.75'
Maximum/minimum number of teeth... 250/6
Maximum helix angle... 60 Deg.
Maximum weight of gear and fixture... 880 lbs.
Maximum/minimum stroke of cutter slide... 5.7/0
Maximum/minimum position of cutter above table at stroke... 12.6/5.5
Range of cutter strokes (12)... 37-235 SPM
Strokes per pitch, steplessly adjusted... 9 half 80

Description :-