

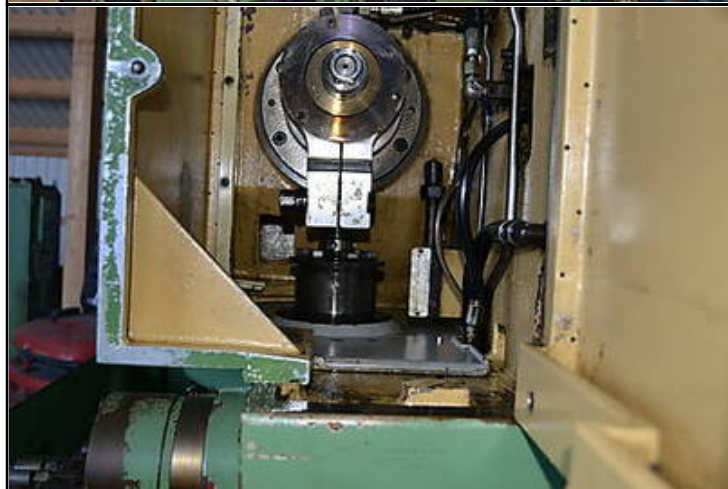
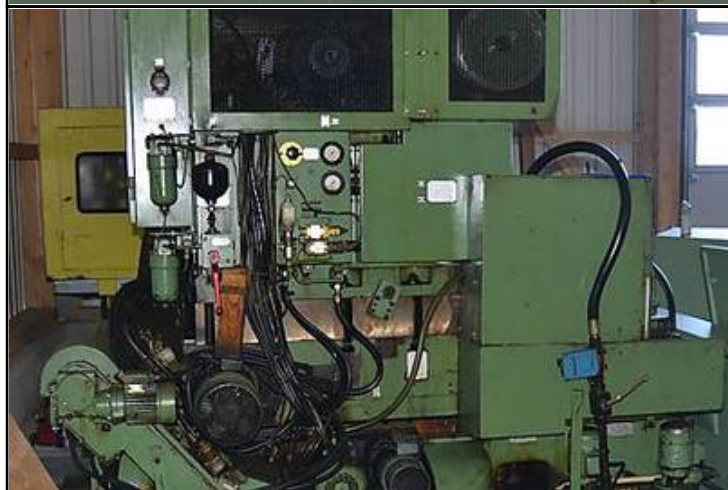
Farrell Engineering Ltd

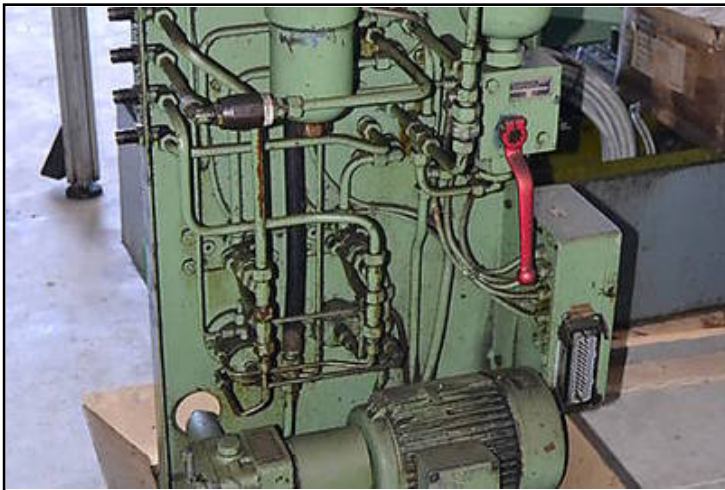
Westbury House, 23-25 Bridge Street, Pinner HA5 3HR United Kingdom

Tel : 0044-208-3432 3291 Fax : 044-208-9657586

Email : chan@farrellengineering.com









Category	:-	Gear Related Machines	Serial No	:-	
Model	:-	LS 150	Country	:-	Germany
Make	:-	Lorenz	Type of Machine	:-	high speed production gear shaper with tailstock
Year	:-	1990	Weight	:-	0.0
Dimensions	:-		Power	:-	
Location	:-		Asking Price	:-	On Request

Specification :-

External gears, max. Ø	150 mm
Gear width, max.	42 mm
Module, max.	3
Internal gears, max. Ø	60 + cutter Ø mm
Internal gears, max. workpiece Ø, approx.	280 mm

Length of stroke 0–50 mm

Adjustment of stroke 0–70 mm

No. of double strokes per minute, approx.

355 / 375 / 400 / 1,060 / 1,120 / 1,200

Radial feed, infinitely variable 2.65–100 mm/min

Shaping feed 160–6,500 mm/min

Table size 250 mm

Table bore 100 mm

Distance between table and shaper head, approx. 265 mm

Total electrical load, approx. 25 kW - 380 V - 50 Hz

Weight 6,500 kg

Description :-